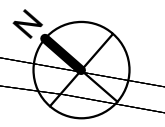
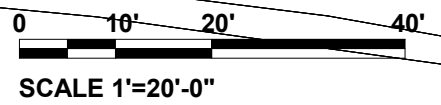
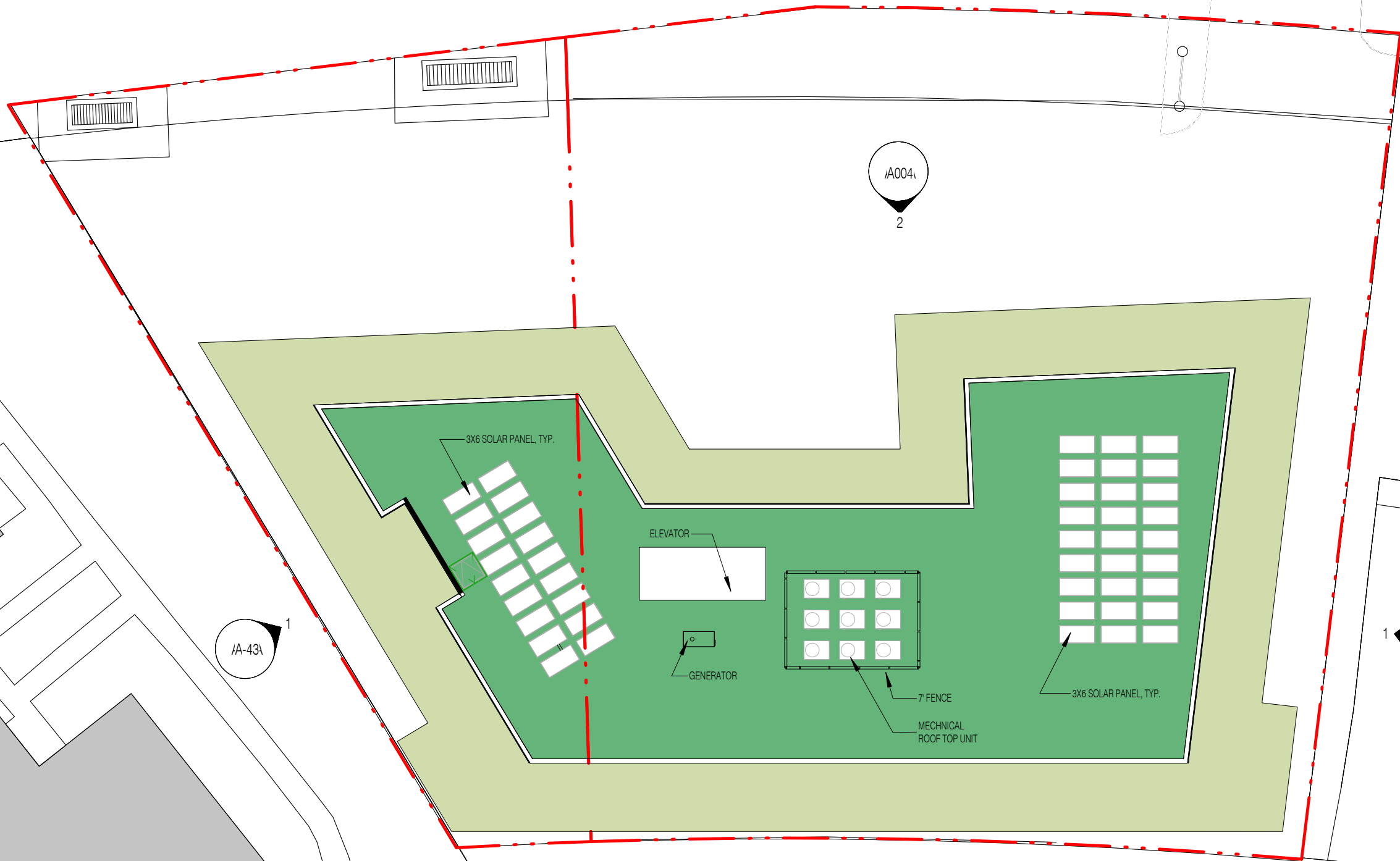


Tab F



BENNING ROAD METRO AFFORDABLE

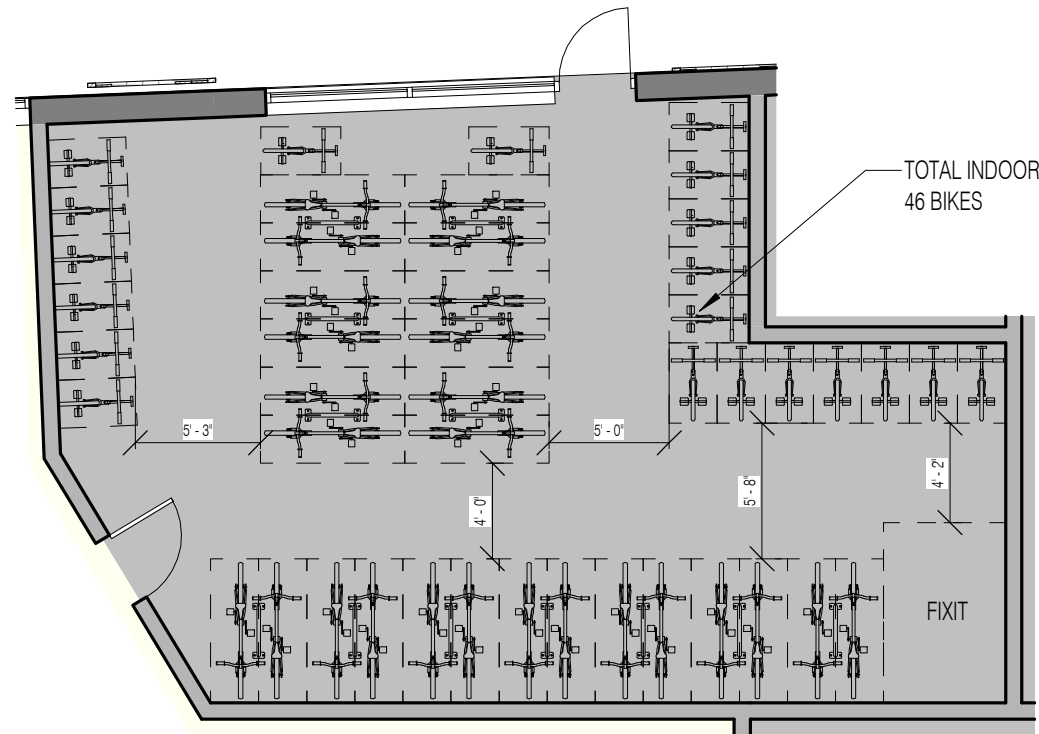
ROOF FLOOR PLAN | A-16

02/10/2022

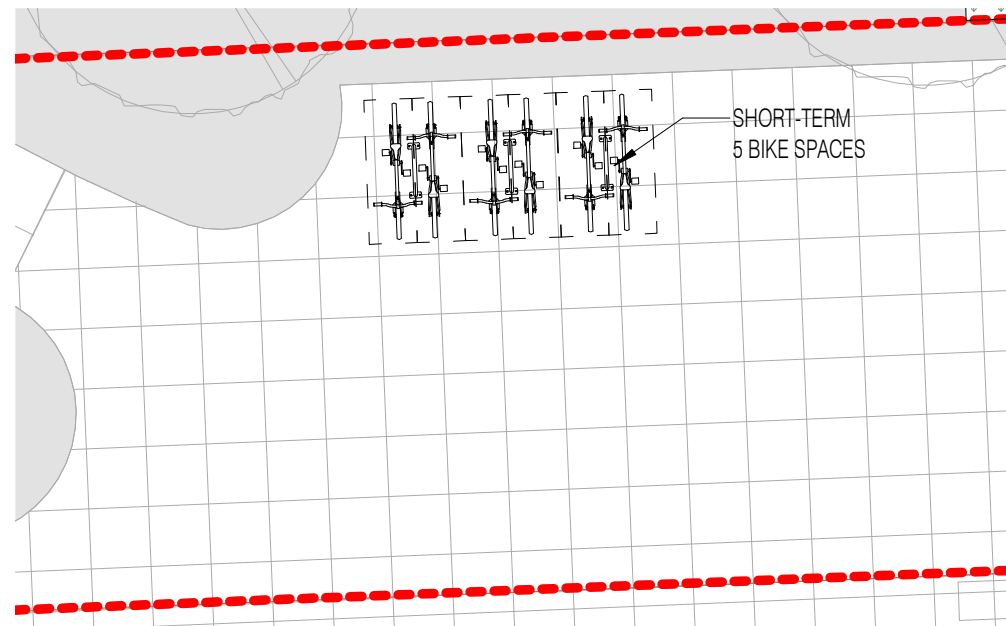
COPYRIGHT © 2020 PGN ARCHITECTS, PLLC



PGN ARCHITECTS



1 INTERIOR BIKE SPACES
1/8" = 1'-0"



2 SHORT TERM BIKE SPACES
1/8" = 1'-0"

SUMMARY

REQUIRED RESIDENTIAL BIKE SPACES

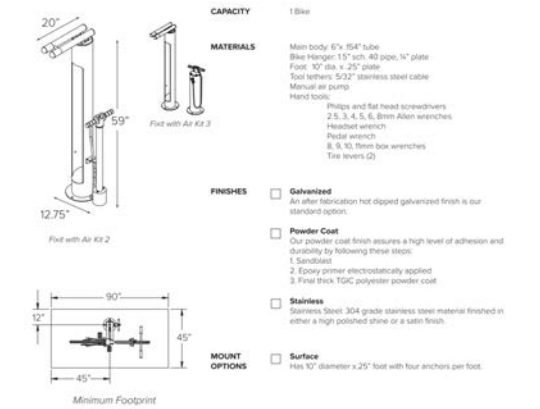
LONG-TERM	36
SHORT-TERM	5
TOTAL BIKE SPACES	41

PROVIDED RESIDENTIAL BIKE SPACES

LONG-TERM	46
SHORT-TERM	5
TOTAL BIKE SPACES	51

BIKE SPACES SUMMARY

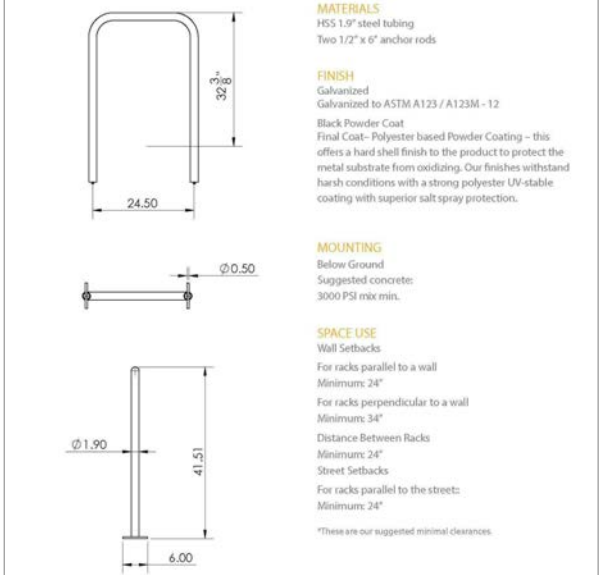
FIXIT
Submittal Sheet



DERO Trafficzone PARKINGZONE
www.trafficzone.com
www.parkingzone.com
800-292-7275

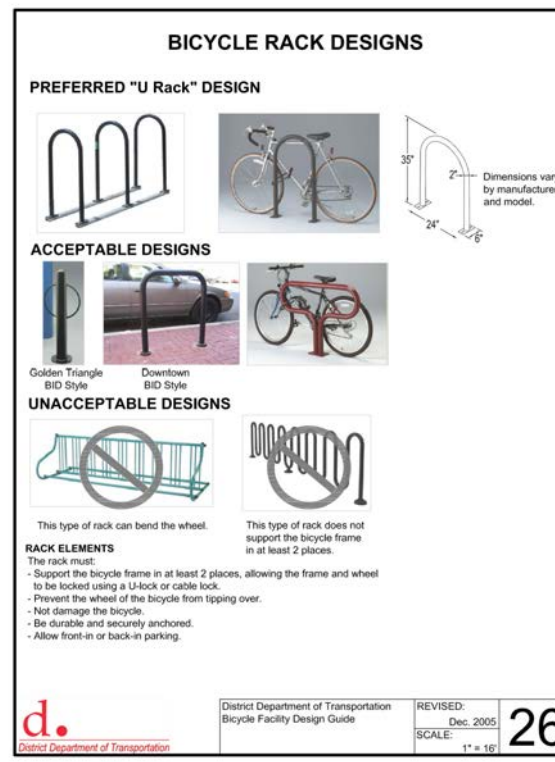
BIKE REPAIR TOOL

GROUND CONTROL SYSTEMS
Formerly Park A Bike

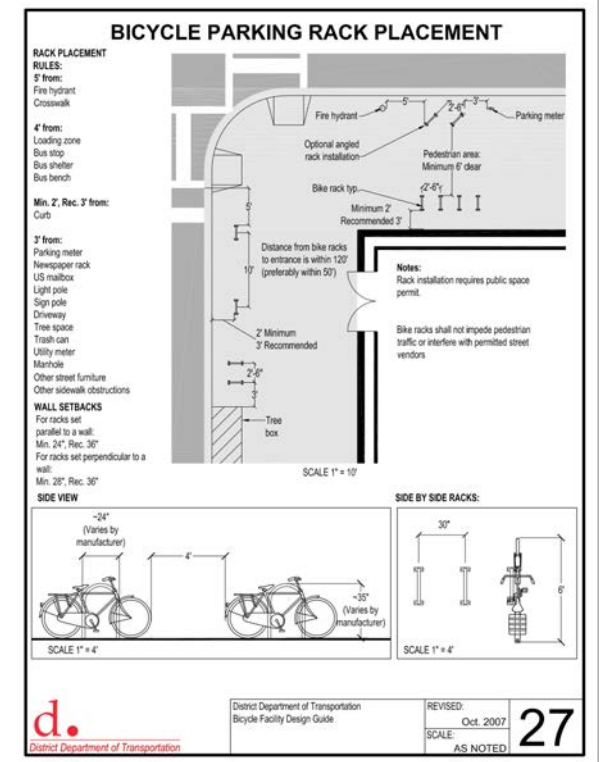


groundcontrolsystems.com | P: 800 630-7225 | info@groundcontrolsystems.com

INTERIOR BIKE RACK

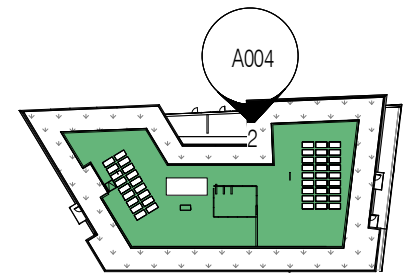


EXTERIOR BIKE RACK



1. Flexibility is requested to vary the location, attributes, and general design of the approved streetscape to comply with the requirements of and approval by the DDOT Public Space Division.

1. Flexibility is requested to vary the final selection of the exterior materials within the color ranges and material types as proposed without reducing the quality of the materials and to make minor refinements to exterior details and dimensions.
2. Flexibility is requested to vary the approved signage provided it is consistent with the indicated dimensions and materials
3. Flexibility is requested to vary the non-residential storefront and associated features and fixtures in public space subject to individual tenant modifications
4. Flexibility is requested to vary exterior ornamentation based on comments from National Park Service



1 NORTH ELEVATION
1" = 20'-0"



SCALE 1"=20'-0"

BENNING ROAD METRO AFFORDABLE

BENNING ROAD NE ELEVATION | A-20

COPYRIGHT © 2020 PGN ARCHITECTS, PLLC



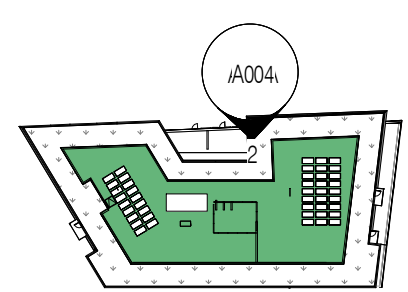
02/10/2022



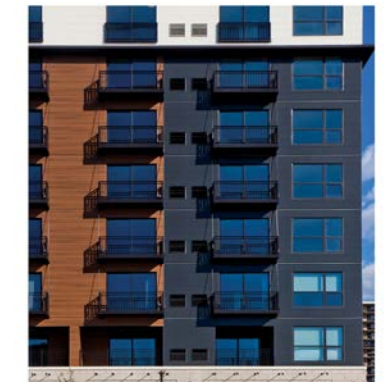
1. Flexibility is requested to vary the final selection of the exterior materials within the color ranges and material types as proposed without reducing the quality of the materials and to make minor refinements to exterior details and dimensions.
2. Flexibility is requested to vary the approved signage provided it is consistent with the indicated dimensions and materials
3. Flexibility is requested to vary the non-residential storefront and associated features and fixtures in public space subject to individual tenant modifications
4. Flexibility is requested to vary exterior ornamentation based on comments from National Park Service



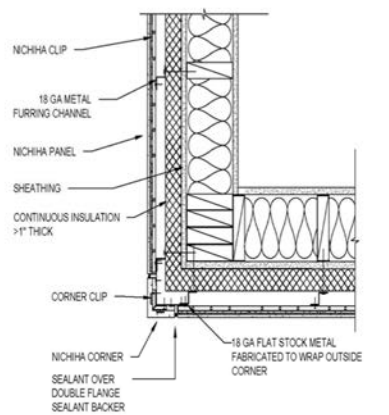
C. GREEN WALL



A. RED PANEL



B. GRAY PANEL



NICHHA - HORIZONTAL AWP - CONTINUOUS INSULATION WITH FURRING - OUTSIDE CORNER - NICHHA FACTORY CORNER
SCALE 1/2"=1'-0"

NICHHA DETAIL

1 BENNING ROAD NE ELEVATION
1" = 20'-0"



SCALE 1"=20'-0"

BENNING ROAD METRO AFFORDABLE

BENNING ROAD NE ELEVATION BW | A-20A

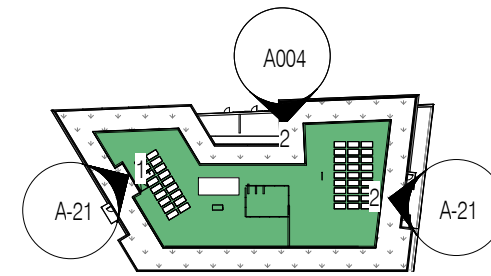
COPYRIGHT © 2020 PGN ARCHITECTS, PLLC



02/10/2022

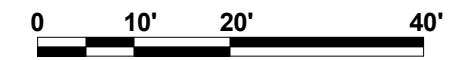


1. Flexibility is requested to vary the final selection of the exterior materials within the color ranges and material types as proposed without reducing the quality of the materials and to make minor refinements to exterior details and dimensions.
2. Flexibility is requested to vary the approved signage provided it is consistent with the indicated dimensions and materials
3. Flexibility is requested to vary the non-residential storefront and associated features and fixtures in public space subject to individual tenant modifications
4. Flexibility is requested to vary exterior ornamentation based on comments from National Park Service



① WEST ELEVATION
1" = 20'-0"

② EAST ELEVATION
1" = 20'-0"



SCALE 1"=20'-0"

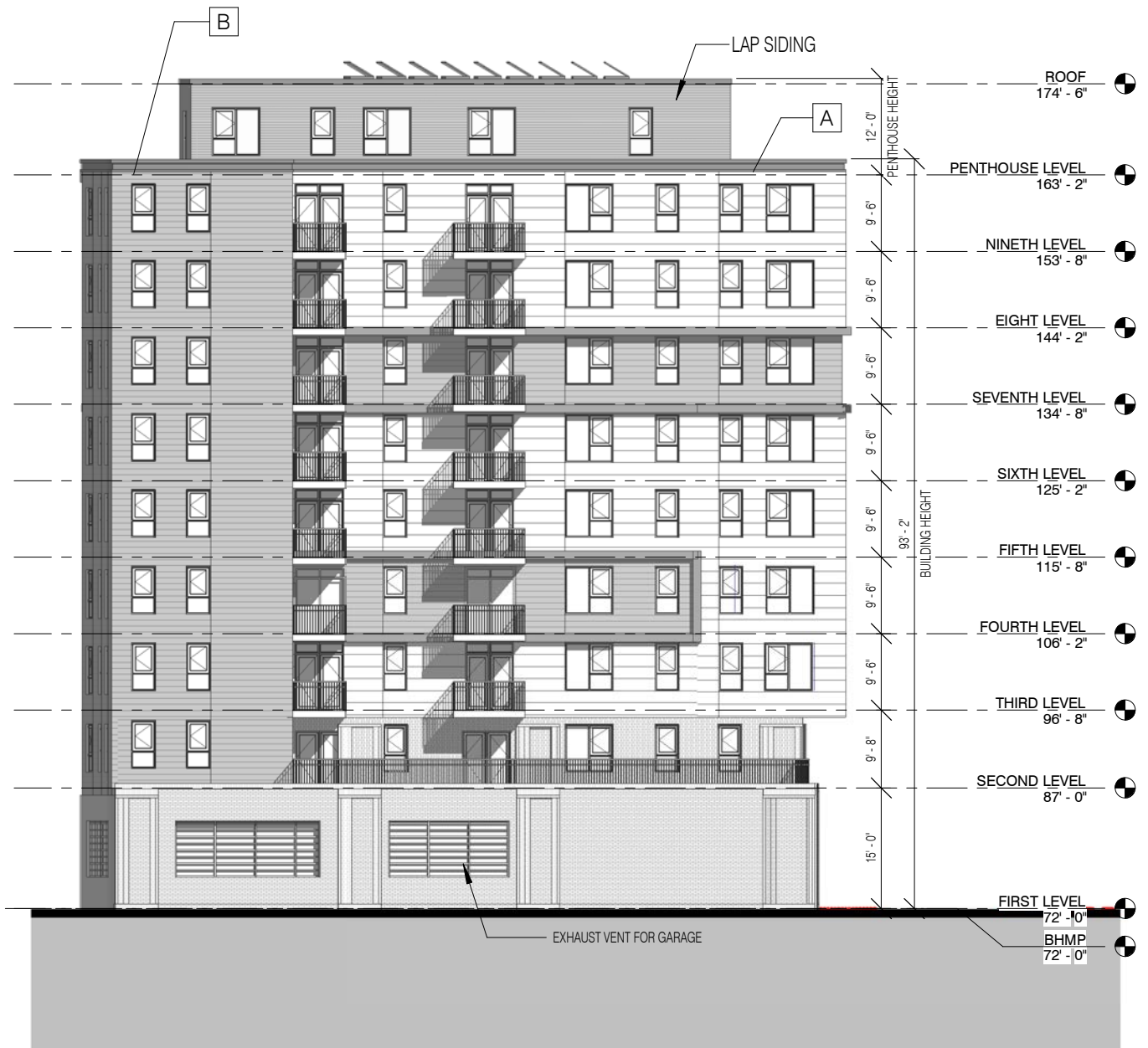
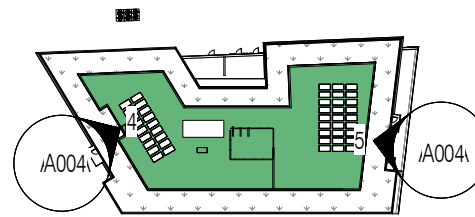
BENNING ROAD METRO AFFORDABLE

EAST AND WEST ELEVATION | A-21

02/10/2022

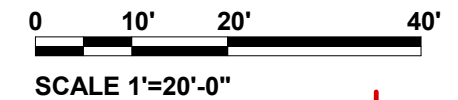


1. Flexibility is requested to vary the final selection of the exterior materials within the color ranges and material types as proposed without reducing the quality of the materials and to make minor refinements to exterior details and dimensions.
2. Flexibility is requested to vary the approved signage provided it is consistent with the indicated dimensions and materials
3. Flexibility is requested to vary the non-residential storefront and associated features and fixtures in public space subject to individual tenant modifications
4. Flexibility is requested to vary exterior ornamentation based on comments from National Park Service



1 WEST ELEVATION BW
1" = 20'-0"

2 EAST ELEVATION BW
1" = 20'-0"



BENNING ROAD METRO AFFORDABLE

EAST AND WEST ELEVATION BW | A-21A

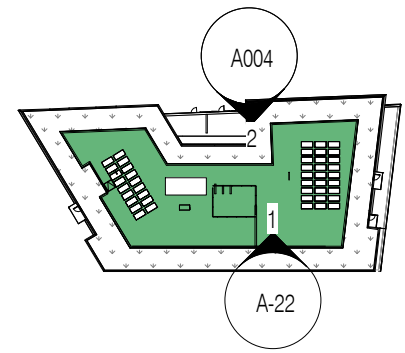
COPYRIGHT © 2020 PGN ARCHITECTS, PLLC



02/10/2022



1. Flexibility is requested to vary the final selection of the exterior materials within the color ranges and material types as proposed without reducing the quality of the materials and to make minor refinements to exterior details and dimensions.
2. Flexibility is requested to vary the approved signage provided it is consistent with the indicated dimensions and materials
3. Flexibility is requested to vary the non-residential storefront and associated features and fixtures in public space subject to individual tenant modifications
4. Flexibility is requested to vary exterior ornamentation based on comments from National Park Service



1 SOUTH ELEVATION
1" = 20'-0"



SCALE 1"=20'-0"

BENNING ROAD METRO AFFORDABLE

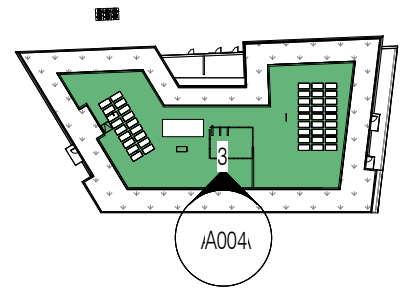
SOUTH ELEVATION | A-22

02/10/2022

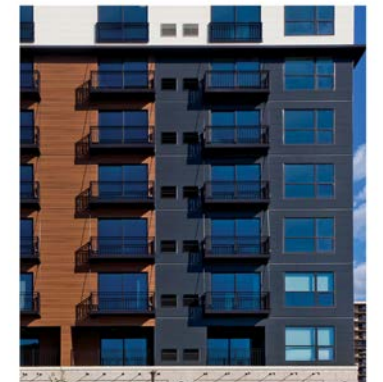
COPYRIGHT © 2020 PGN ARCHITECTS, PLLC



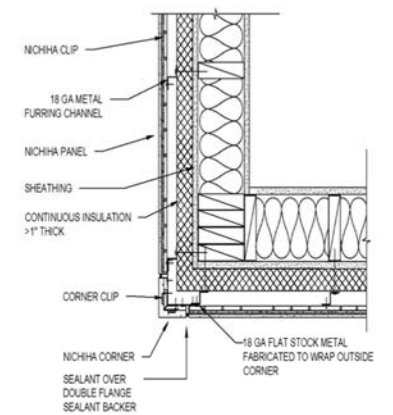
1. Flexibility is requested to vary the final selection of the exterior materials within the color ranges and material types as proposed without reducing the quality of the materials and to make minor refinements to exterior details and dimensions.
2. Flexibility is requested to vary the approved signage provided it is consistent with the indicated dimensions and materials
3. Flexibility is requested to vary the non-residential storefront and associated features and fixtures in public space subject to individual tenant modifications
4. Flexibility is requested to vary exterior ornamentation based on comments from National Park Service



A. RED PANEL



B. GRAY PANEL



NICHHA - HORIZONTAL AWP - CONTINUOUS INSULATION WITH FURRING - OUTSIDE CORNER - NICHHA FACTORY CORNER
SCALE: 1/12" = 1'-0"

NICHHA DETAIL

1 SOUTH ELEVATION
1" = 20'-0"



SCALE 1"=20'-0"

BENNING ROAD METRO AFFORDABLE

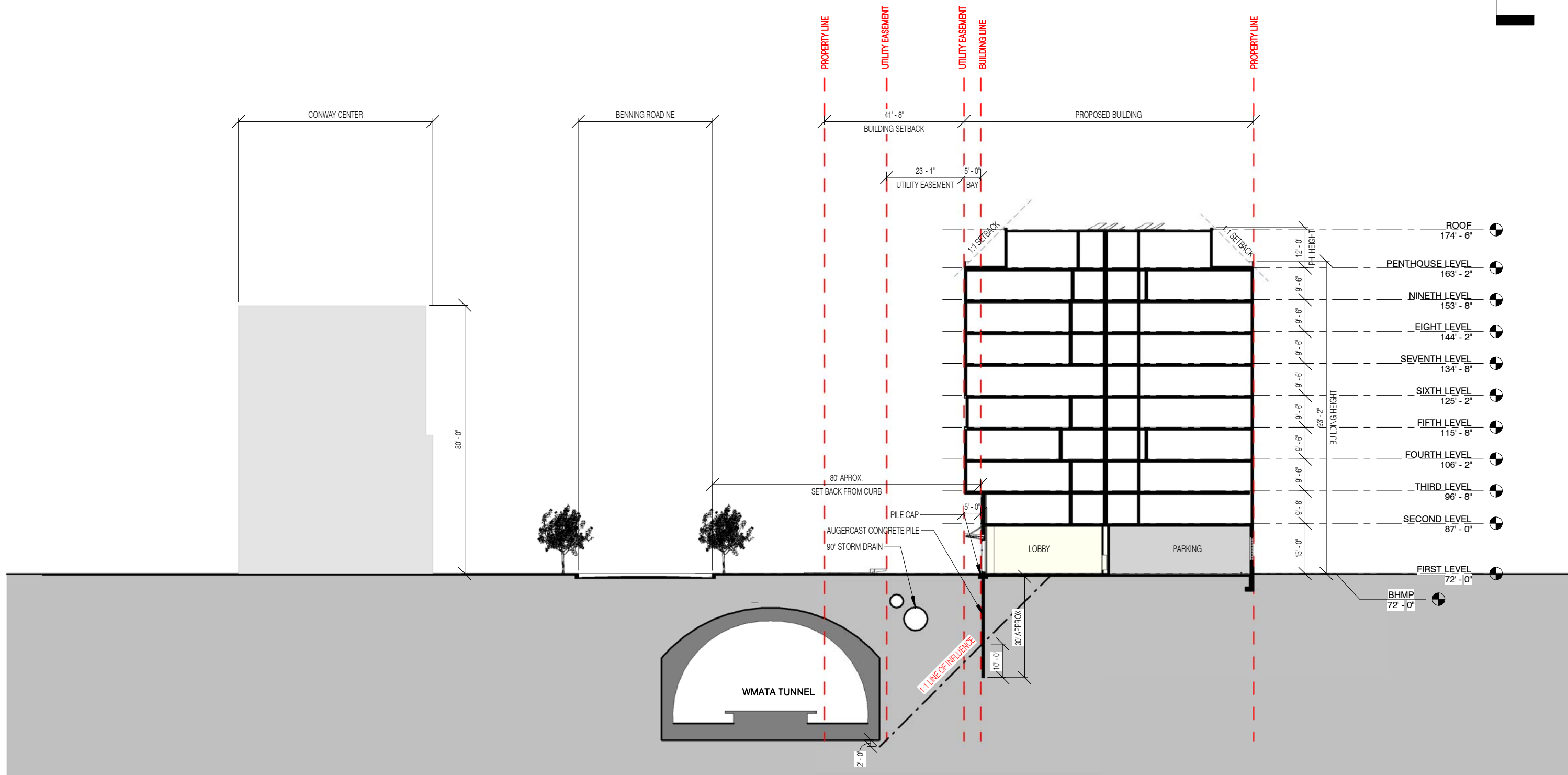
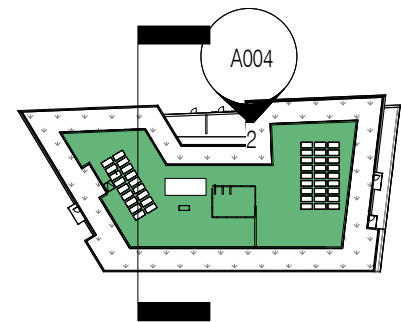
SOUTH ELEVATION BW | A-22A

COPYRIGHT © 2020 PGN ARCHITECTS, PLLC



02/10/2022





SCALE 1"=30'-0"
SECTION 1 | A-30

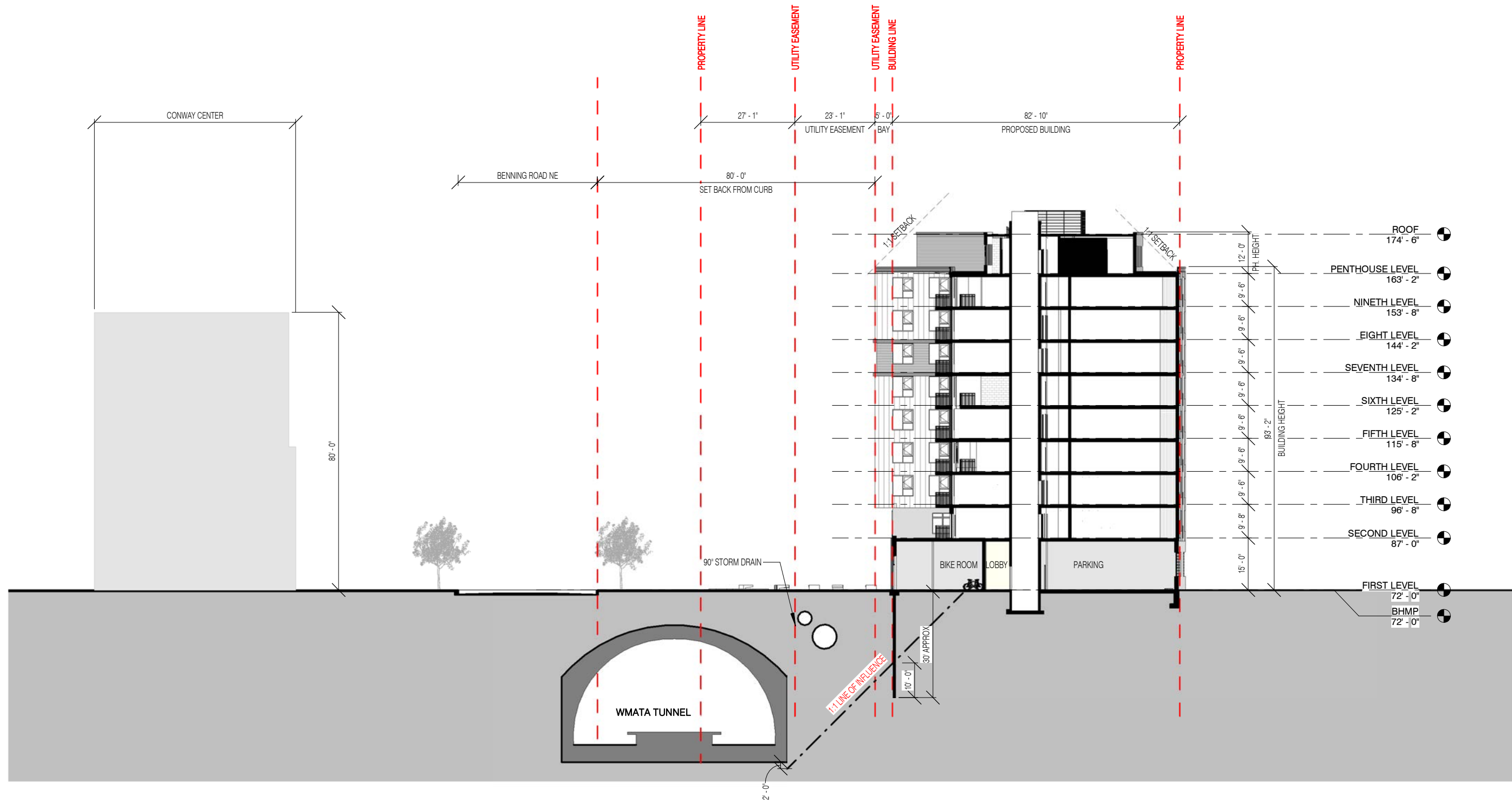
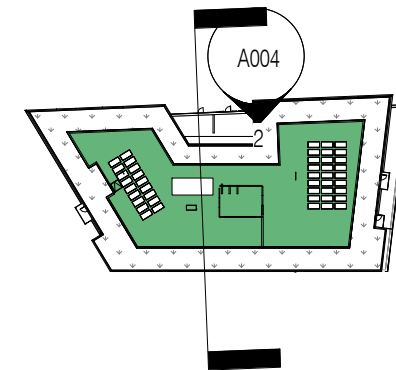
BENNING ROAD METRO AFFORDABLE

COPYRIGHT © 2020 PGN ARCHITECTS, PLLC



02/10/2022





SCALE 1"=30'-0"
SECTION 2 | A-31

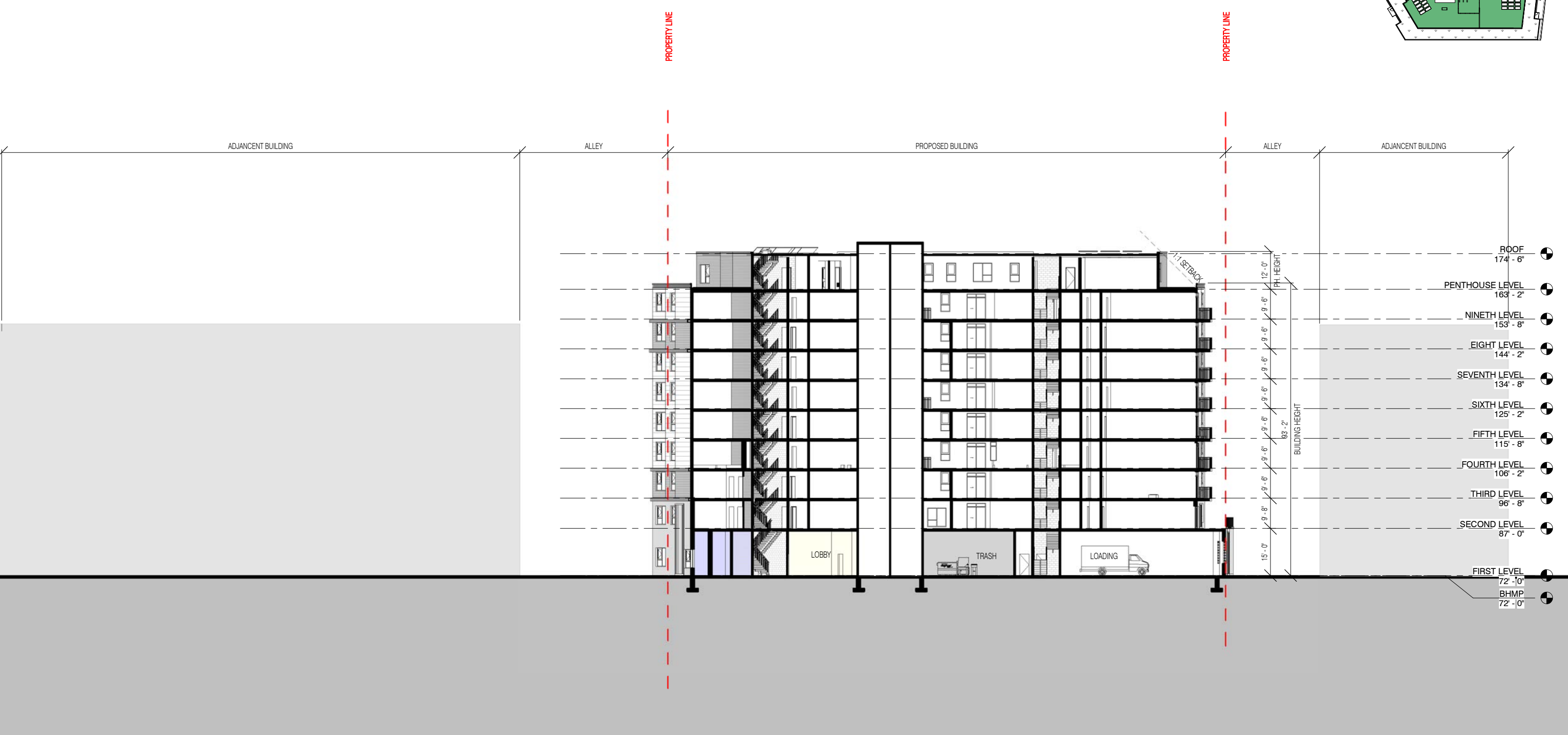
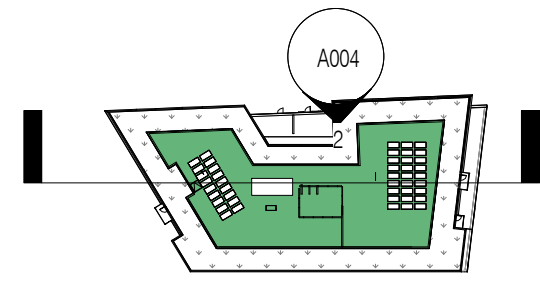
BENNING ROAD METRO AFFORDABLE

COPYRIGHT © 2020 PGN ARCHITECTS, PLLC



02/10/2022





- ROOF 174'-6"
- PENTHOUSE LEVEL 163'-2"
- NINTH LEVEL 153'-8"
- EIGHT LEVEL 144'-2"
- SEVENTH LEVEL 134'-8"
- SIXTH LEVEL 125'-2"
- FIFTH LEVEL 115'-8"
- FOURTH LEVEL 106'-2"
- THIRD LEVEL 96'-8"
- SECOND LEVEL 87'-0"
- FIRST LEVEL 72'-10"
- BHMP 72'-0"



SCALE 1"=30'-0"
SECTION 3 | A-32

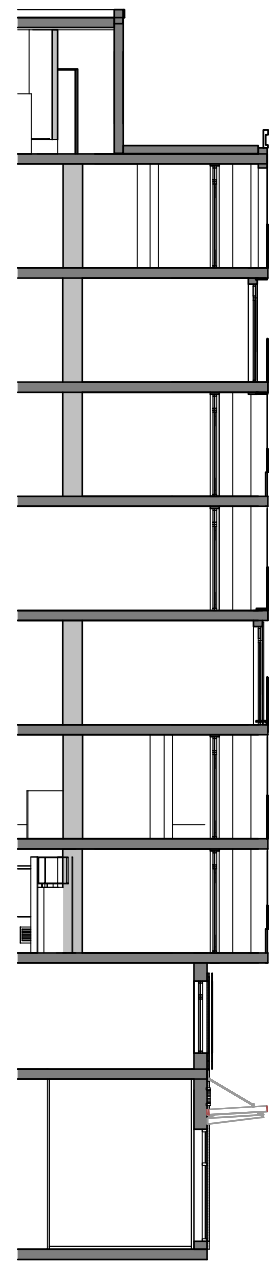
BENNING ROAD METRO AFFORDABLE

COPYRIGHT © 2020 PGN ARCHITECTS, PLLC

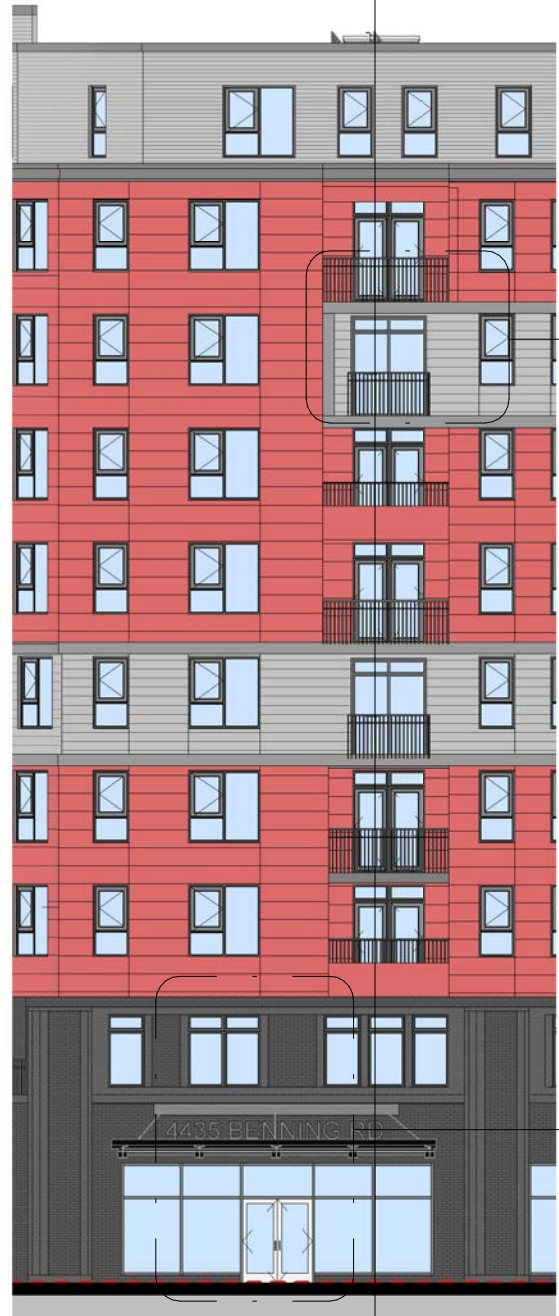


02/10/2022

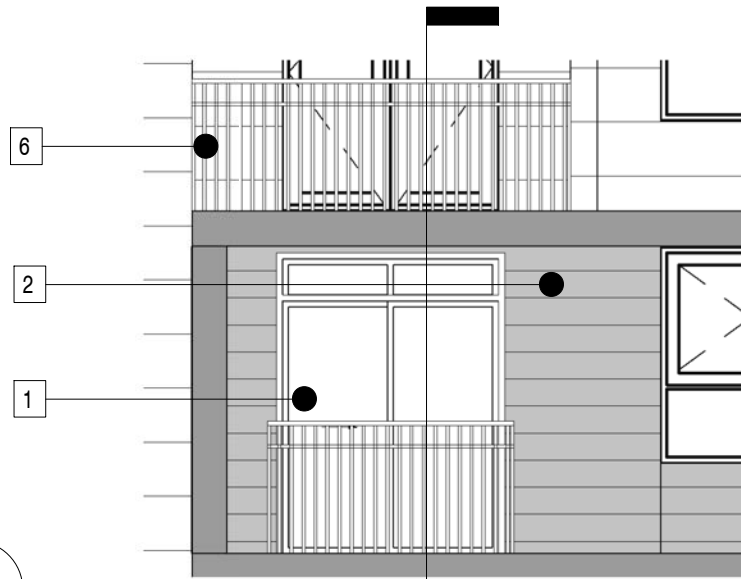




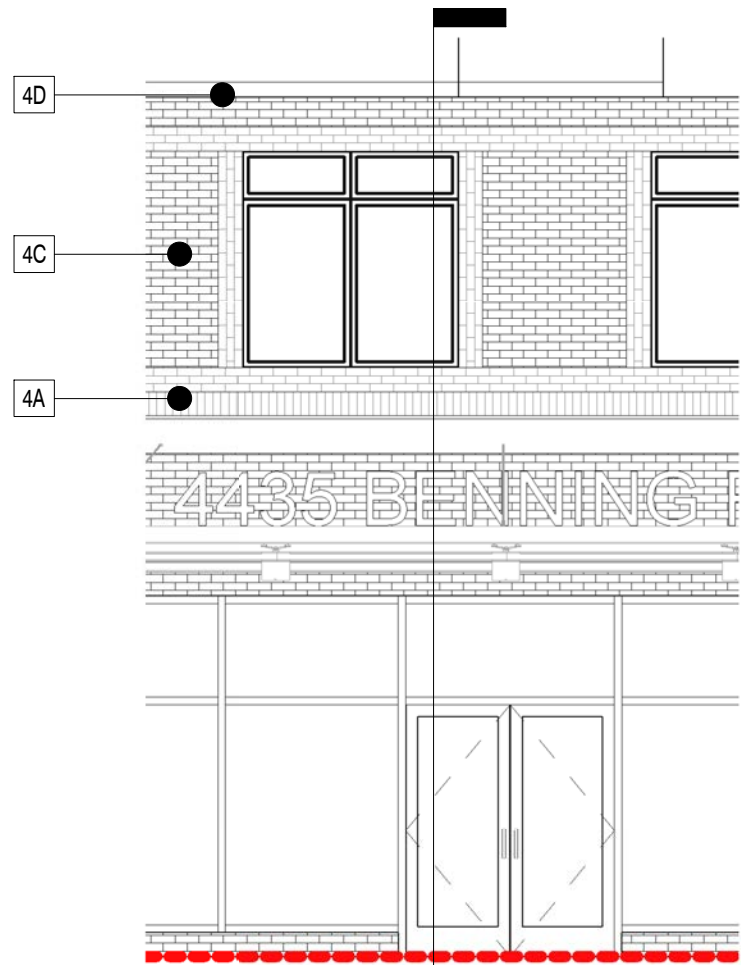
④ Partial Section 1
1/16" = 1'-0"



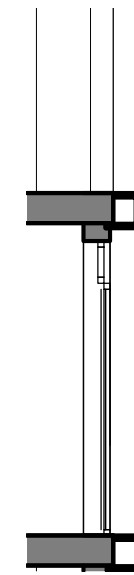
① Partial Elevation 1
1/16" = 1'-0"



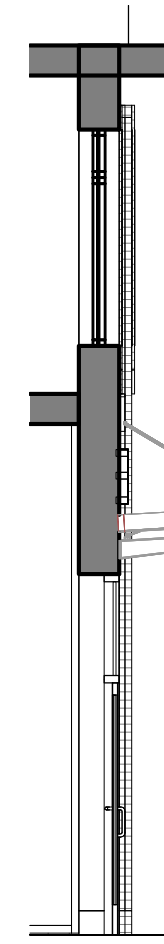
③ Partial Elevation 1 - Callout 2
3/16" = 1'-0"



② Partial Elevation 1 - Callout 1
3/16" = 1'-0"



⑤ DETAIL 1
3/16" = 1'-0"



⑥ DETAIL 2
3/16" = 1'-0"



1. METAL VERTICAL RAILING



2. NICHIIHA_GREY SMOOTH NICHIPANEL



3. NICHIIHA_MULTIFAMILY DESIGN PANEL



4. BELDEN_ASHBERRY VELOUR BRICK

- A. SOLDIER BRICK PATTERN
- B. STACK BRICK PATTERN
- C. RUNNING BOND STANDARD BRICK
- D. BRICK CORNICE



6. DECORATIVE METAL

1. Flexibility is requested to vary the final selection of the exterior materials within the color ranges and material types as proposed without reducing the quality of the materials and to make minor refinements to exterior details and dimensions.
2. Flexibility is requested to vary the approved signage provided it is consistent with the indicated dimensions and materials.
3. Flexibility is requested to vary the non-residential storefront and associated features and fixtures in public space subject to individual tenant modifications.
4. Flexibility is requested to vary exterior ornamentation based on comments from National Park Service.
5. Flexibility is requested to vary the window frames to light grey, grey or black.

BENNING ROAD METRO AFFORDABLE

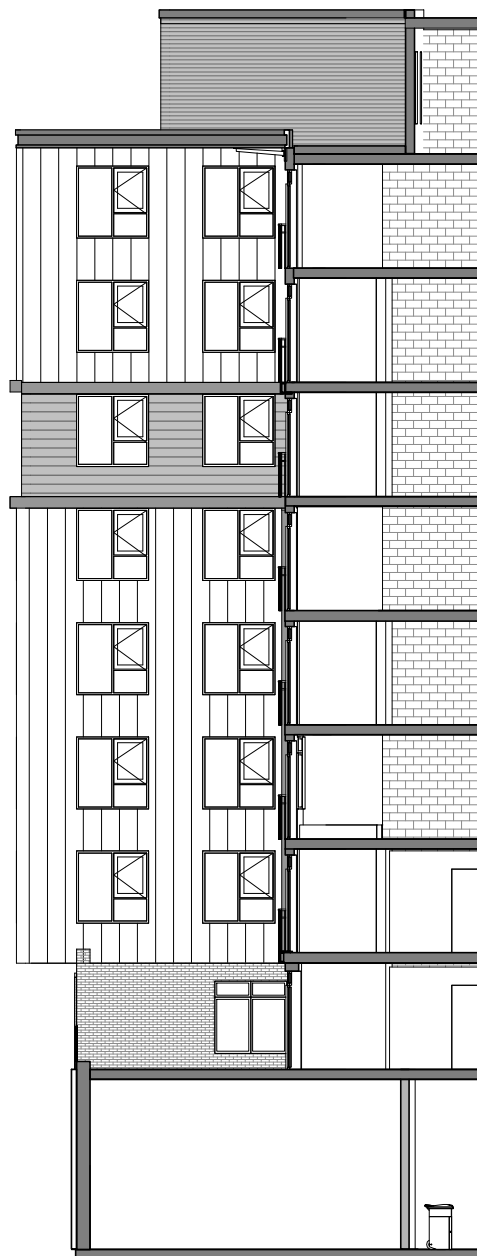
MATERIAL DETAILING | A-40

COPYRIGHT © 2020 PGN ARCHITECTS, PLLC



02/10/2022





2 Partial Section 2
1/16" = 1'-0"



1 Partial Elevation 2
1/16" = 1'-0"



4 Partial Elevation 2 - Callout 2
3/16" = 1'-0"



3 Partial Elevation 2 - Callout 1
3/16" = 1'-0"



1. METAL VERTICAL RAILING



2. NICHIBA_GREY SMOOTH NICHIPANEL



3. NICHIBA_MULTIFAMILY DESIGN PANEL



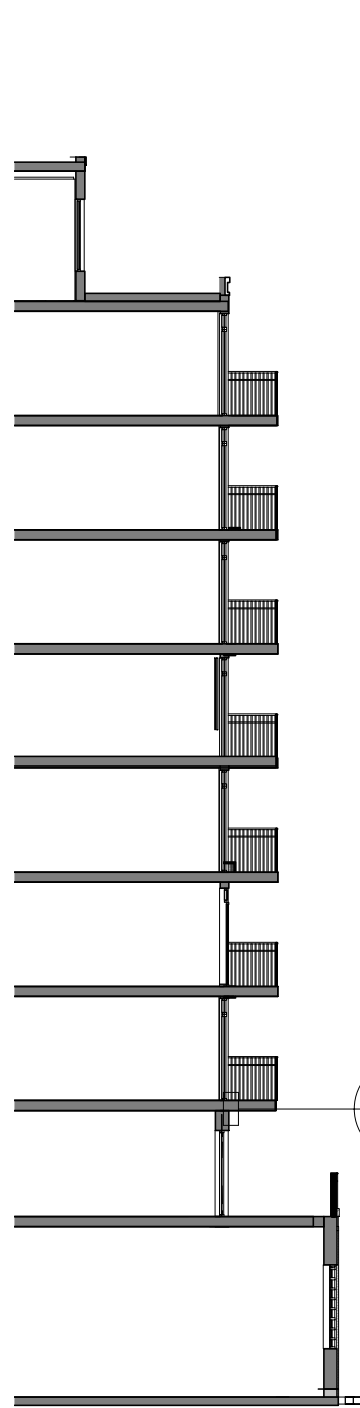
4. BELDEN_ASHBERRY VELOUR BRICK

- A. SOLDIER BRICK PATTERN
- B. STACK BRICK PATTERN
- C. RUNNING BOND STANDARD BRICK
- D. BRICK CORNICE



6. DECORATIVE METAL

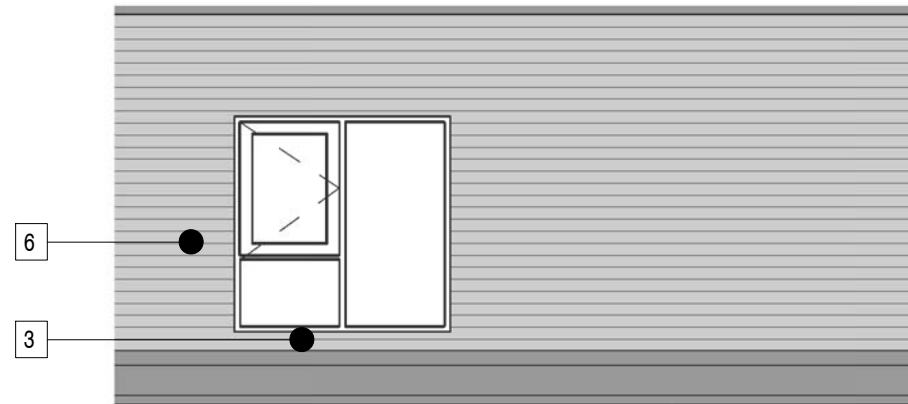
1. Flexibility is requested to vary the final selection of the exterior materials within the color ranges and material types as proposed without reducing the quality of the materials and to make minor refinements to exterior details and dimensions.
2. Flexibility is requested to vary the approved signage provided it is consistent with the indicated dimensions and materials
3. Flexibility is requested to vary the non-residential storefront and associated features and fixtures in public space subject to individual tenant modifications
4. Flexibility is requested to vary exterior ornamentation based on comments from National Park Service
5. Flexibility is requested to vary the window frames to light grey, grey or black



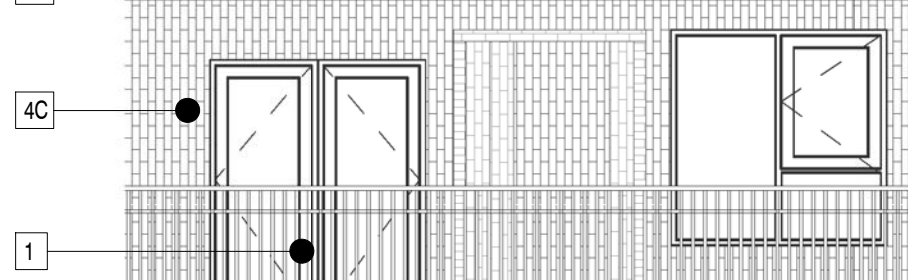
2 Partial Section 3
1/16" = 1'-0"



1 Partial Elevation 3
1/16" = 1'-0"



4 Partial Elevation 3 - Callout 2
3/16" = 1'-0"



3 Partial Elevation 3 - Callout 1
3/16" = 1'-0"

5 BRICK DETAIL
3/16" = 1'-0"



1. METAL VERTICAL RAILING



2. NICHIBA_GREY SMOOTH NICHIPANEL



3. NICHIBA_MULTIFAMILY DESIGN PANEL



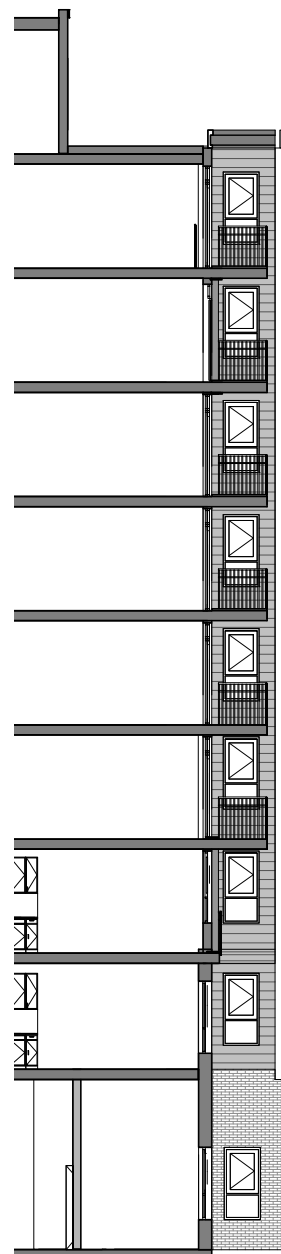
4. BELDEN_ASHBERRY VELOUR BRICK

- A. SOLDIER BRICK PATTERN
- B. STACK BRICK PATTERN
- C. RUNNING BOND STANDARD BRICK
- D. BRICK CORNICE



6. DECORATIVE METAL

1. Flexibility is requested to vary the final selection of the exterior materials within the color ranges and material types as proposed without reducing the quality of the materials and to make minor refinements to exterior details and dimensions.
2. Flexibility is requested to vary the approved signage provided it is consistent with the indicated dimensions and materials.
3. Flexibility is requested to vary the non-residential storefront and associated features and fixtures in public space subject to individual tenant modifications.
4. Flexibility is requested to vary exterior ornamentation based on comments from National Park Service.
5. Flexibility is requested to vary the window frames to light grey, grey or black.



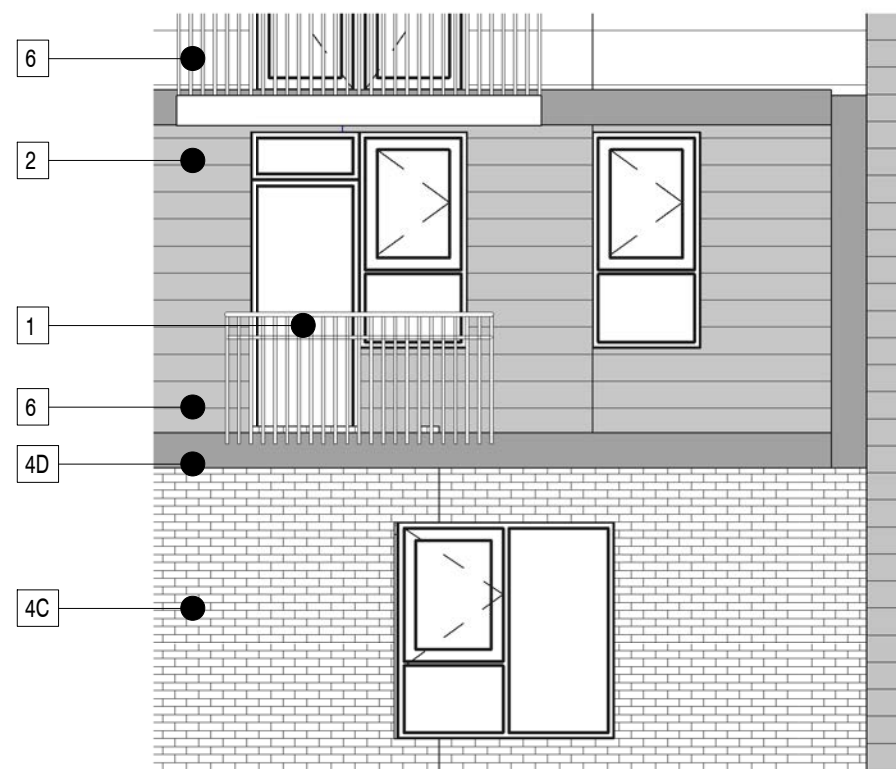
② Partial Section 4
1/16" = 1'-0"



① Partial Elevation 4
1/16" = 1'-0"



④ Partial Elevation 4 - Callout 2
3/16" = 1'-0"



③ Partial Elevation 4 - Callout 1
3/16" = 1'-0"



1. METAL VERTICAL RAILING



2. NICHIIHA_GREY SMOOTH NICHIPANEL



3. NICHIIHA_MULTIFAMILY DESIGN PANEL



4. BELDEN_ASHBERRY VELOUR BRICK

- A. SOLDIER BRICK PATTERN
- B. STACK BRICK PATTERN
- C. RUNNING BOND STANDARD BRICK
- D. BRICK CORNICE

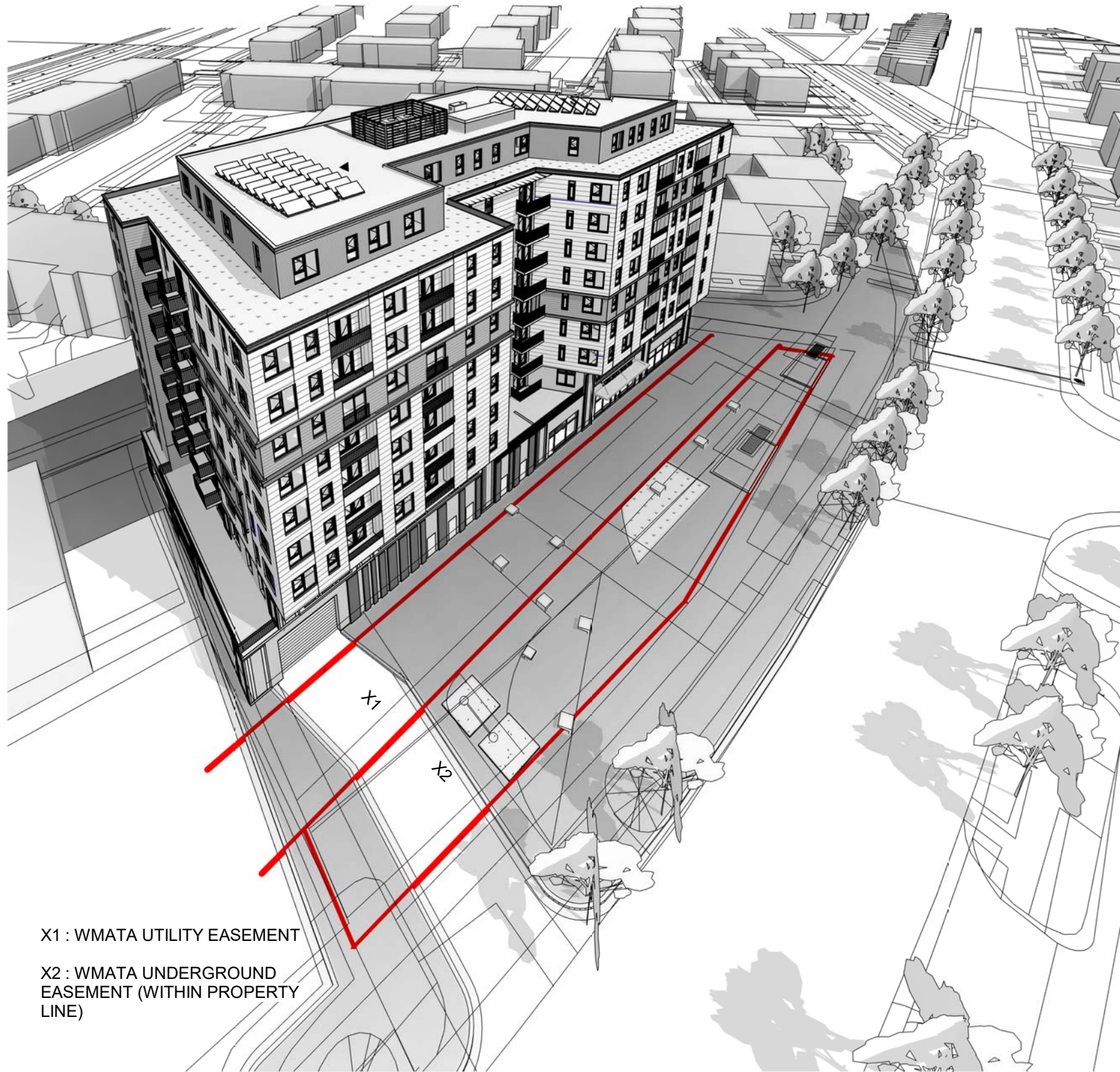


6. DECORATIVE METAL

- 1. Flexibility is requested to vary the final selection of the exterior materials within the color ranges and material types as proposed without reducing the quality of the materials and to make minor refinements to exterior details and dimensions.
- 2. Flexibility is requested to vary the approved signage provided it is consistent with the indicated dimensions and materials
- 3. Flexibility is requested to vary the non-residential storefront and associated features and fixtures in public space subject to individual tenant modifications
- 4. Flexibility is requested to vary exterior ornamentation based on comments from National Park Service
- 5. Flexibility is requested to vary the window frames to light grey, grey or black

BENNING ROAD METRO AFFORDABLE

MATERIAL DETAILING | A-43



X1 : WMATA UTILITY EASEMENT
 X2 : WMATA UNDERGROUND EASEMENT (WITHIN PROPERTY LINE)

③ Pers Benning Rd Sky

BENNING ROAD METRO AFFORDABLE



① KEY PLAN FOR VIGNETTES 1
 1" = 100'-0"



② Pers Benning Rd

COPYRIGHT © 2020 PGN ARCHITECTS, PLLC





① KEY PLAN FOR VIGNETTES 2
1" = 100'-0"



② Pers Benning Rd East



③ Pers Benning Rd West

BENNING ROAD METRO AFFORDABLE

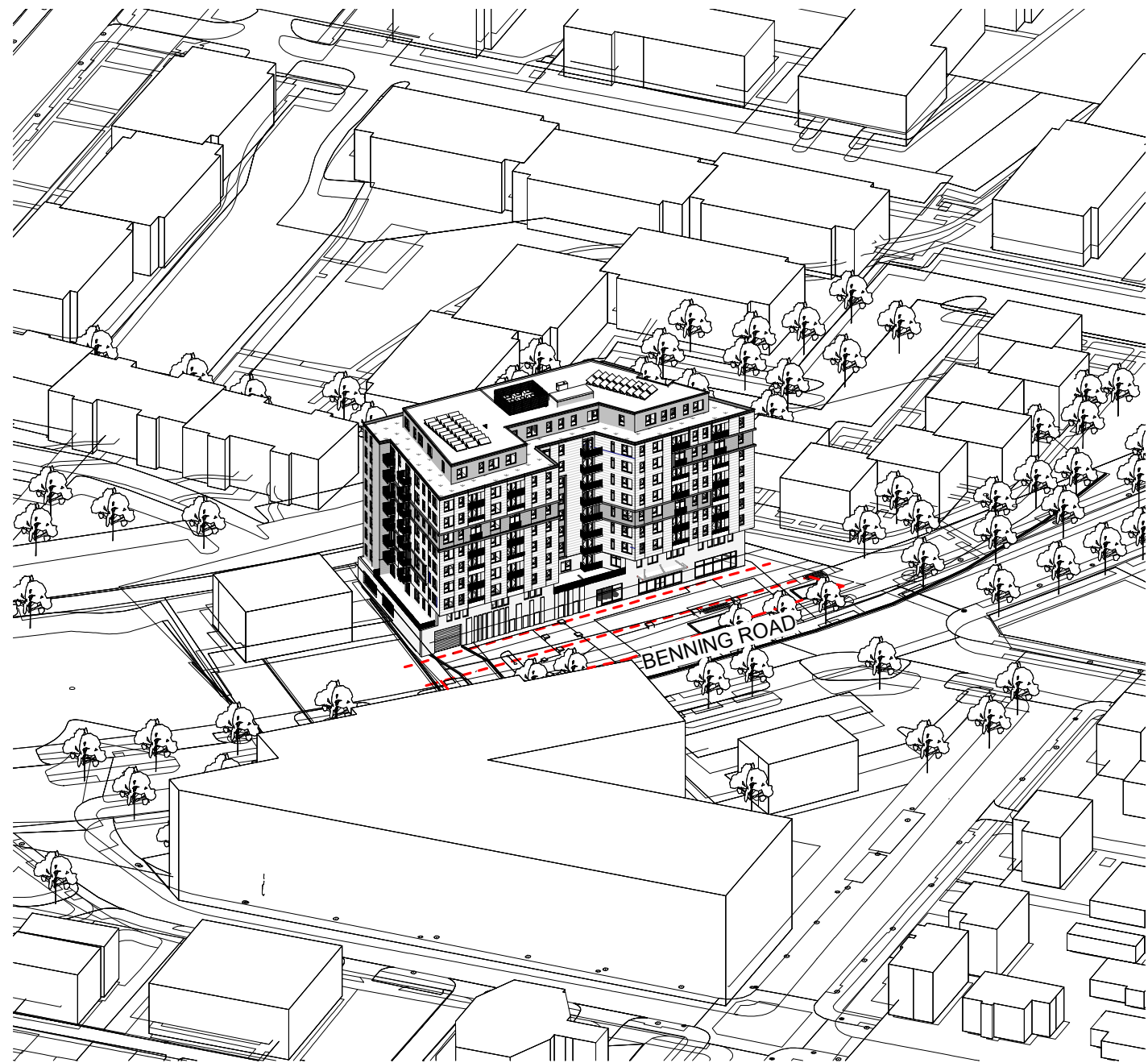
COPYRIGHT © 2020 PGN ARCHITECTS, PLLC



VIGNETTES | A-51

02/10/2022





① 3D Aerial View 1



② 3D Aerial View 2

BENNING ROAD METRO AFFORDABLE

COPYRIGHT © 2020 PGN ARCHITECTS, PLLC



02/10/2022

VIGNETTES | A-52





BENNING ROAD METRO AFFORDABLE

RENDERING | A-60

COPYRIGHT © 2020 PGN ARCHITECTS, PLLC



02/10/2022



PGN ARCHITECTS



BENNING ROAD METRO AFFORDABLE

RENDERING | A-61

COPYRIGHT © 2020 PGN ARCHITECTS, PLLC



02/10/2022



PGN ARCHITECTS



BENNING ROAD METRO AFFORDABLE

RENDERING | A-62

COPYRIGHT © 2020 PGN ARCHITECTS, PLLC



02/10/2022





BENNING ROAD METRO AFFORDABLE

RENDERING | A-63

COPYRIGHT © 2020 PGN ARCHITECTS, PLLC



02/10/2022

